

1132 Chobert

Aluminium - Countersunk head
2.4 mm (3/32") - 6.4 mm (1/4")

Features

- Consistent controlled clamp, ideal for soft or brittle materials
- Internally tapered bore ensures consistent light clamp to reduce potential damage to materials
- Expands radially during installation to ensure maximum hole fill
- Lower in-place costs than welding or nail rivets
- Ideal pivot pin or hose tail
- Can be bowl fed for larger volume applications using automated equipment

Material

- Aluminium alloy, natural (3.5% Mg)

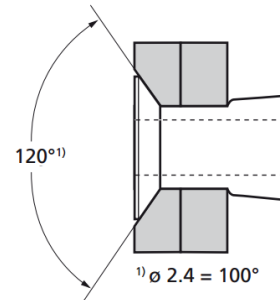
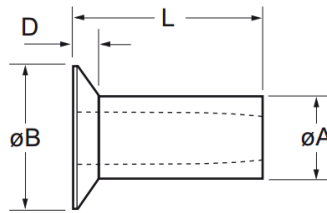


Other available options on request:

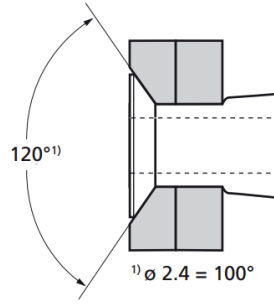
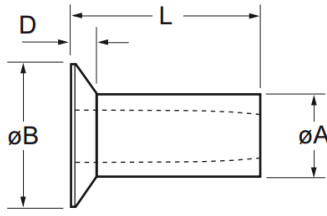
2.5% Mg aluminium alloy - Replace part no. **01132** with **01124**

5.0% Mg aluminium alloy - Replace part no. **01132** with **01136**

For assistance, contact your nearest [Gripwell](#) team



Part No.	Size ø	Grip Range		Hole Size		øB max.	D max.	L max.	øA max.	Fasteners per pod ± 1	Shear (typical) kN
		min.	max.	min.	max.						
01132-00304	2.4 (3/32")	0.00	1.57	2.49	2.55	4.16	0.89	2.46	46	90	0.50
01132-00306		1.57	3.17								
01132-00308		3.17	4.75								
01132-00310		4.75	6.35								
01132-00312		6.35	7.92								
01132-00404	3.2 (1/8")	0.00	1.57	3.26	3.34	5.20	0.92	3.25	46	90	0.90
01132-00406		1.57	3.17								
01132-00408		3.17	4.75								
01132-00410		4.75	6.35								
01132-00412		6.35	7.92								



Part No.	Size ø	Grip Range		Hole Size		øB max.	D max.	L max.	øA max.	Fasteners per pod ± 1	Shear (typical) kN
		min.	max.	min.	max.						
01132-00506	4.0 (5/32")	1.57	3.17	4.09	4.17	6.22	0.97	4.88	4.04	61	1.60
01132-00508		3.17	4.75					648		46	
01132-00510		4.75	6.35					8.06		37	
01132-00512		6.35	7.92					9.66		31	
01132-00514		7.92	9.52					11.23		26	
01132-00516		9.52	11.10					12.82		23	
01132-00607	4.8 (3/16")	1.57	3.17	4.85	4.93	8.61	1.43	5.69	4.80	52	2.00
01132-00609		3.17	4.75					7.27		41	
01132-00611		4.75	6.35					8.87		33	
01132-00613		6.35	7.92					10.44		28	
01132-00615		7.92	9.52					12.04		25	
01132-00617		9.52	11.10					13.62		22	
01132-00619	11.10	12.70	15.22	19							
01132-00809	6.4 (1/4")	3.17	4.75	6.35	6.43	10.19	1.45	7.27	6.30	41	2.70
01132-00811		4.75	6.35					8.87		33	
01132-00813		6.35	7.92					10.44		28	
01132-00815		7.92	9.52					12.04		25	
01132-00817		9.52	11.10					13.62		22	
01132-00819		11.10	12.70					15.22		19	

Assembly Applications

- Automotive
- Electronic components
- Sheet metal
- Electrical engineering
- Domestic appliances
- General light fabrication
- Injection moulded components

